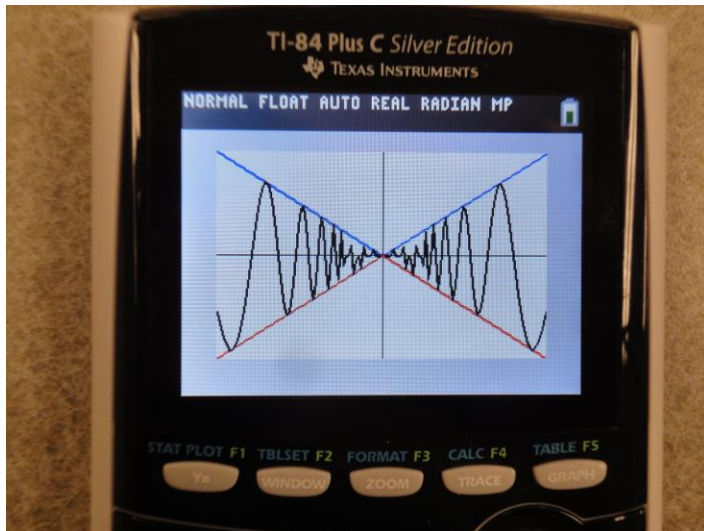
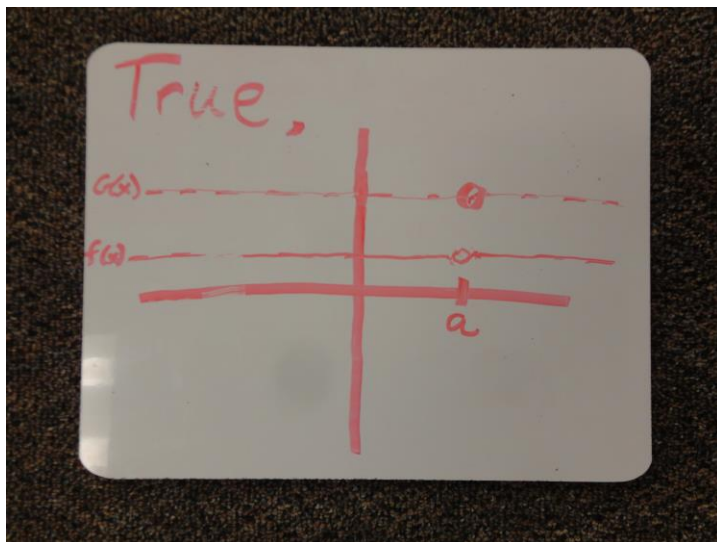


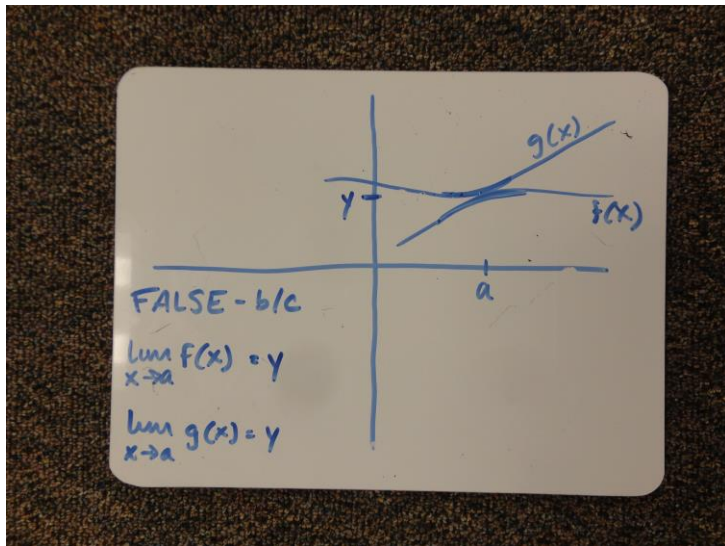
Squeeze Theorem problem from the notes:



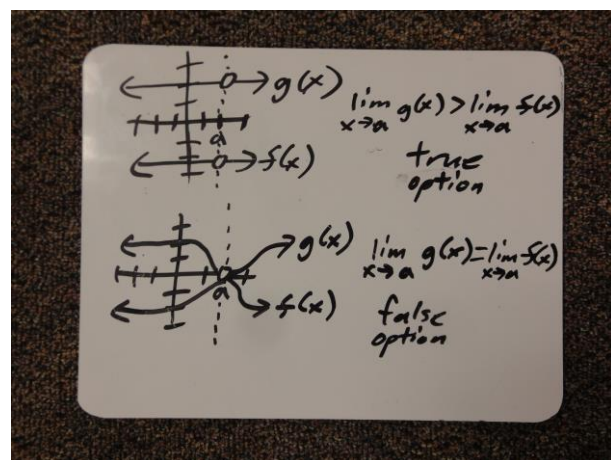
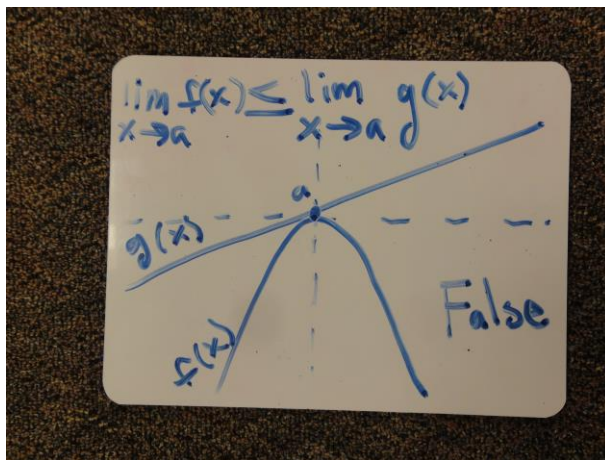
Main event:



From above, it appears that $\lim_{x \rightarrow a} f(x) < \lim_{x \rightarrow a} g(x)$ so we might conjecture the statement is TRUE.
Hmmm... more on this later.



Above picture: What if we still have $f < g$ but place the functions closer together? Now we are on to something! The limits *can* be equal (even though in the above picture it is difficult to see what is going on near $x = a$).



The above solutions tell us that the statement, in general, is FALSE.