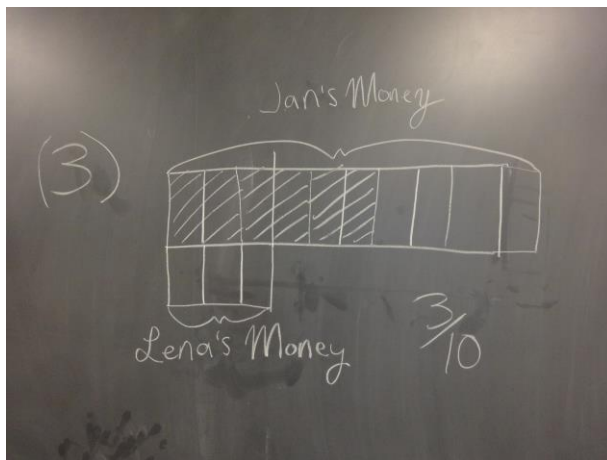
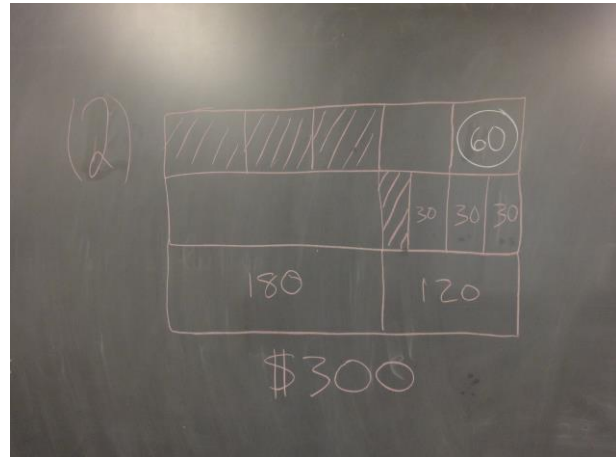
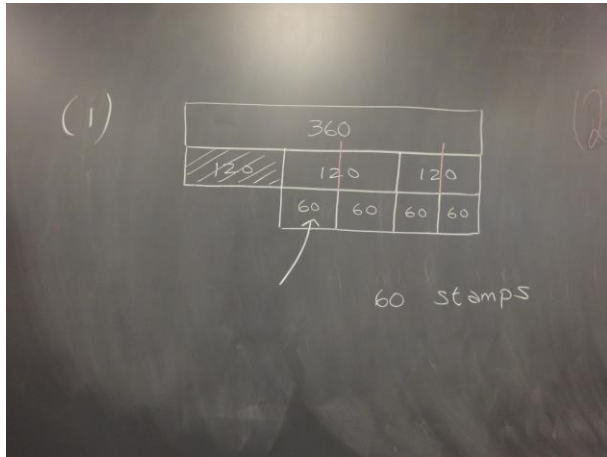


MATH 247
Tape Diagrams

3 in-class problems:



FICTION AND NONFICTION

The ratio of fiction to nonfiction books on the shelf is 2:3. Sandra checked out 1 fiction and 2 nonfiction books from the shelf. Now there are 22 non-fiction books on the shelf. How many fiction books are on the shelf? Use a tape diagram to help.

